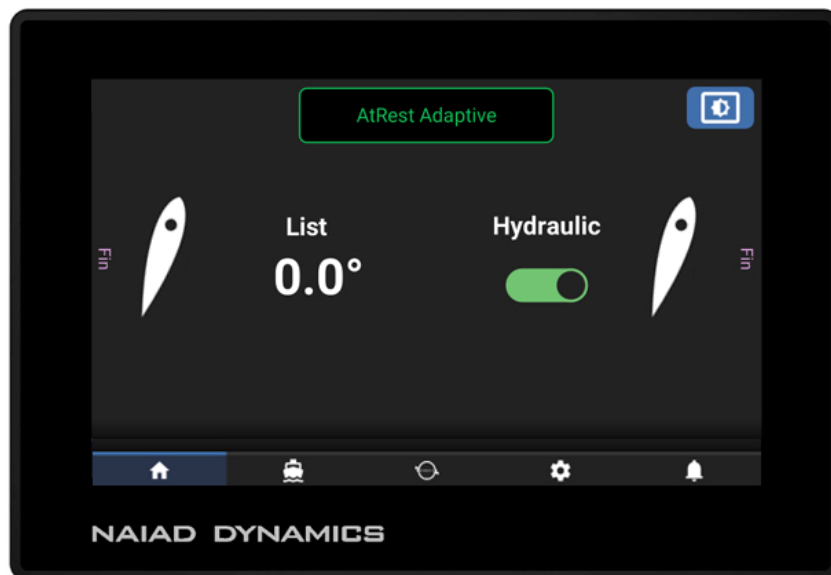
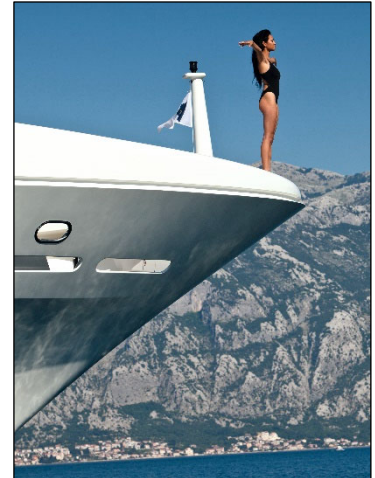


AtRest[®] Adaptive Stabilization

NAIAD DYNAMICS[®] developed and successfully supplied the world's first fin stabilizer system to significantly reduce the roll of a vessel while anchored or adrift. In the decades that followed, ND continued to refine our proprietary motion control algorithms to produce our most advanced motion control system to date.

Key Features

- ✓ The control system automatically adjusts the gains (sensitivity) settings to match the sea conditions for a truly "hands-free" experience.
- ✓ Sea conditions in a harbor can change quickly due to marine traffic, making AtRest Adaptive essential for best performance.
- ✓ The Distributed Control System (DCS) is Naiad's most powerful and advanced motion control system ever.
- ✓ The Control Node contains a quad core processor-based industrial high-speed computer easily performing the multitude of calculations necessary for high-performance motion control.
- ✓ The new Motions Node uses advanced technology to detect roll and other motions with a degree of accuracy far exceeding our previous motion sensors and other competing products.
- ✓ The AtRest Adaptive feature is also available as an upgrade to existing DATUM[™] control systems. Speak to a sales representative for details.



AtRest Adaptive Mode on ND's Advanced Distributed Control System

NAIAD DYNAMICS US, INC.

Connecticut, USA
+1 203 929 6355

Maryland, USA
+1 301 690 2010

Florida, USA
+1 954 797 7566

NAIAD DYNAMICS UK LIMITED

Southampton, England
+44 (0) 2392 53 9750

NAIAD DYNAMICS HOLLAND, BV

Maastricht, Netherlands
+31 (0) 43 604 9200

NAIAD DYNAMICS FRANCE SARL

La Ciotat, France
+33 (0) 486 06 00 05

ND ASIA PACIFIC PTY. LIMITED

Perth, Australia
+61 (0) 451 699 676



www.naiad.com
sales@naiad.com

NAIAD DYNAMICS: The Science of Ship Motion Control[®]